

The commercial building's "warehouse" look conflicts with Kapahulu's historic streetfront design

Numerous driveways disrupt vehicular and pedestrian traffic

Street lights address vehicles instead of pedestrians



Parking fronting Kapahulu Avenue creates an unattractive, auto-oriented streetscape

Bus stop offers limited seating and no shade

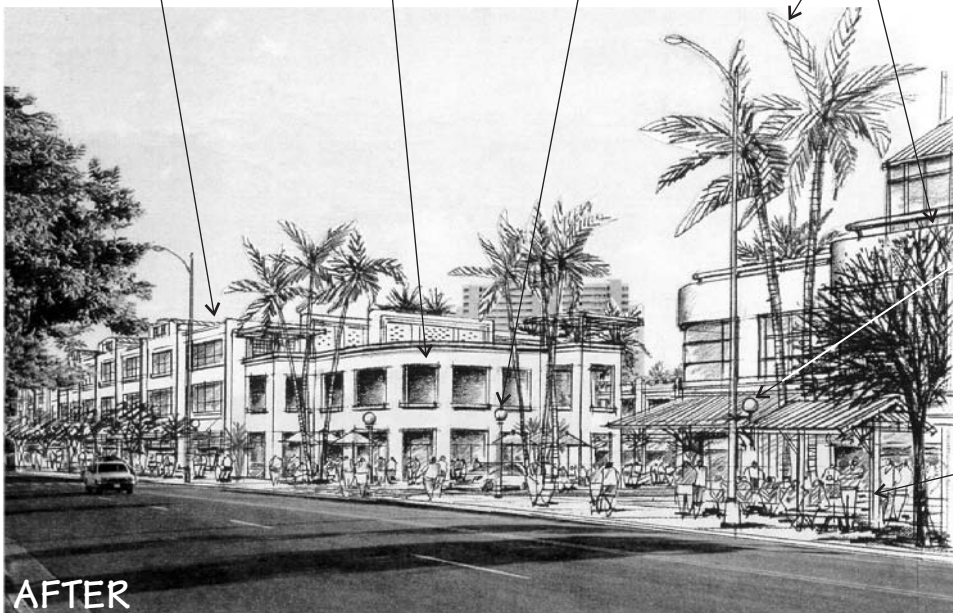
**BEFORE**

2- and 3-story buildings, up to 40 feet high, along Kapahulu Avenue with residential above ground floor commercial

Contemporary interpretation of art deco style with rounded corner on building facade and repeating windows with a horizontal emphasis

Human-scale lampposts provide light to pedestrians

The addition of street trees enhance the pedestrian experience and soften the streetscape



Pedestrian height lamp fixtures have been added to existing cobra style street poles

Addition of the City's prototypical bus stop increases seating and offers shade

**AFTER**